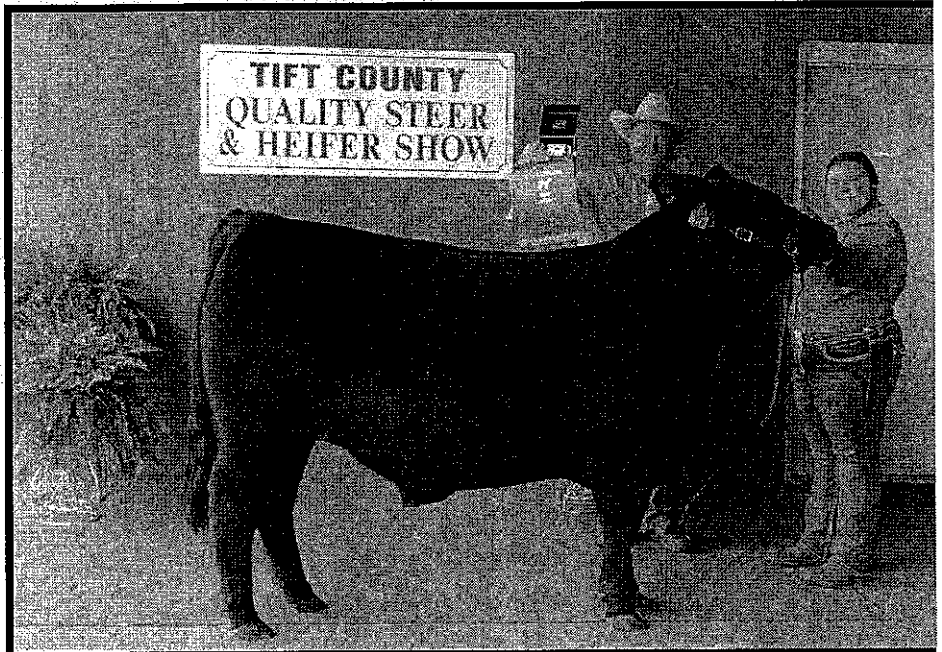


# 2018 TIFT COUNTY Quality Steer Show And Sale

**\*SHOW\***  
**4:00 P.M.**  
**March 5**

**\*TIFT COUNTY\***  
**LIVESTOCK**  
**MULTIPURPOSE**  
**BUILDING**

**\*SALE\***  
**7:00 P.M.**  
**March 5**



**2017 GRAND CHAMPION**

Shown by Ivey Cook

*Purchased by*

**G. A. Farms**

est will be based on the official entry  
ht at county show.

age Daily Gain Contest: 1<sup>st</sup> - \$40; 2<sup>nd</sup>  
5<sup>th</sup> - \$20; 6<sup>th</sup> - \$15; 7<sup>th</sup> through 10<sup>th</sup> -

s: 1<sup>st</sup> - trophy, ribbon and \$60; 2<sup>nd</sup> -  
on and \$45; 4<sup>th</sup> - ribbon and \$40; 5<sup>th</sup> -  
on and \$30; 7<sup>th</sup> and all steers - ribbon

\$200, plus award.

0, plus award.

ses by weight, regardless of breed. All  
ter September 1 of the previous year.

el State Heifer Show regulations.

asses will be the same as steer classes.

- \$200, plus award.

0, plus award

e shown by the owner except when

the same class. Substitute showmen

H or FFA member.

ors must comply with the no pass/no

gible to compete at the county show.

rs must complete a record book to be

ounty show. Agricultural teachers and

nine whether or not record books are

. Those 4-H and FFA members with

will not be allowed to show in the

y is as follows: 1<sup>st</sup> - \$60; 2<sup>nd</sup> - \$50; 3<sup>rd</sup>

. All other exhibitors completing a

\$20.

e reserves the final and absolute right

id regulations.

ell in the Premium Auction.

**2018 Tift County Quality Steer & Heifer Show Donors:**

- AgGeorgia Farm Credit
- Ameris Bank-Jared Ross
- Cannon Marketing
- Colquitt EMC
- D&D Irrigation
- Dr. Bret Wagenhorst
- Gary & Beth Vowell
- Harlie & Dawn Townson
- Harold Harper SR
- Lewis Taylor Farms
- Multi-Kare Incorporated
- Owen Heating & Cooling
- Padgett Family Livestock
- Posh Salon
- Ranch Feed
- Randy Hand Livestock
- Rutland Farms
- South Central Livestock
- Stylenmakers
- Surcheros
- Sylvester Animal Hospital
- Three Chicks and a Hen
- Tift County 4-H
- Tift County Farm Bureau
- Tift County FFA
- Tift County Young Farmers
- Tift General Tire
- Tifton Vinyl Siding & Supply
- Turner County Stock Yards
- Wisham Jellies

Tift County Home Grown			
Heifer Class			
Tag#	Name	Weight	Placing
232	Caley Driggers	1005	1
Steer Class			
Tag#	Name	Weight	Placing
830	Beau Townson	1265	2
234	Caley Driggers	1280	1

Tift County Quality Heifer Show			
Class 1			
Tag #	Name	Weight	Placing
1108	Chandler Thompson	902	1
Class 2			
Tag #	Name	Weight	Placing
232	Caley Driggers	1005	2
233	Caley Driggers	1005	1
Class 3			
Tag #	Name	Weight	Placing
7D	Caley Driggers	1080	1
<i>Grand Champion Heifer: Caley Driggers (7D)</i>			
<i>Reserve Champion Heifer: Caley Driggers (233)</i>			

## 2018 Tift County Quality Steer Show

Class 1			
Tag #	Name	Weight	Placing
1110	Chandler Thompson	1010	2
835	Grant Matthews	1085	1
Class 2			
Tag #	Name	Weight	Placing
1111	Hardy Goodman	1100	2
833	Samantha Matthews	1160	3
834	Samantha Matthews	1165	1
Class 3			
Tag #	Name	Weight	Placing
827	Ivey Cook	1255	2
830	Beau Townson	1265	3
234	Caley Driggers	1280	1
Class 4			
Tag #	Name	Weight	Placing
1112	Hardy Goodman	1340	2
1106	Matthew Layfield	1375	1

*Grand Champion Steer:* Caley Driggers (234) ①  
*Reserve Champion Steer:* Matthew Layfield (1106) ②

## 2018 Showmanship

Junior 4 <sup>th</sup> -6 <sup>th</sup>		
Name	Grade	Placing
Matthew Layfield	5	1
Chandler Thompson	6	2
Senior 10 <sup>th</sup> - 12 <sup>th</sup> grade		
Name	Grade	Placing
Ivey Cook	10	1
Grant Matthews	10	4
Caley Driggers	12	3
Samantha Matthews	12	Scratch
Beau Thompson	12	5
Hardy Goodman	12	2

## 2018 Steer Average Daily Gain

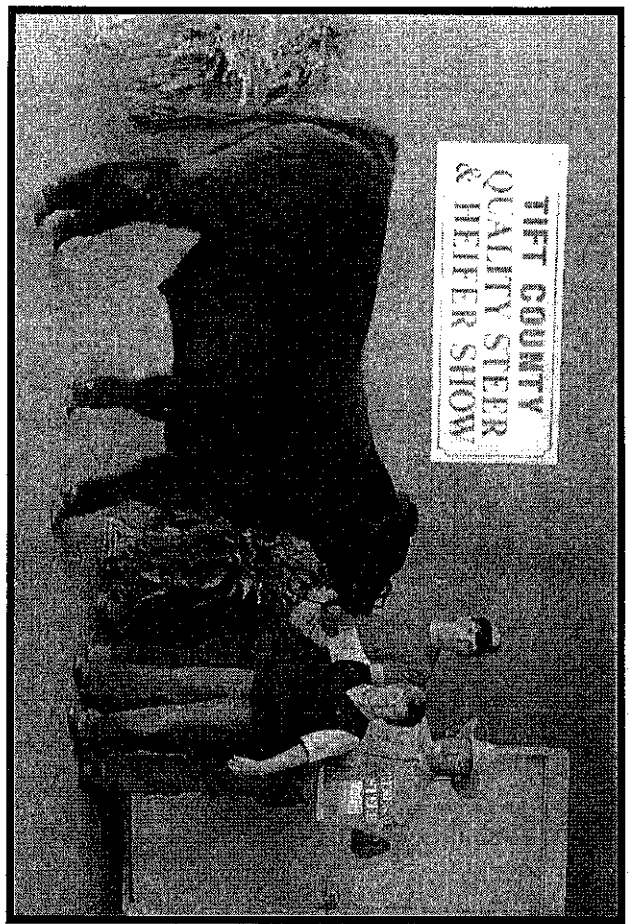
Placing	Tag #	ADG	Name
1	830	2.885	Beau Townson
2	1107	2.790	Chandler Thompson
3	1112	2.006	Hardy Goodman
4	834	1.955	Sann Matthews
5	1106	1.911	Matthew Layfield
6	234	1.834	Caley Driggers
7	833	1.656	Sann Matthews
8	835	1.650	Grant Matthews
9	1111	1.541	Hardy Goodman
10	827	1.242	Ivey Cook

FEA

# 2017 TIFT COUNTY QUALITY STEER SHOW BUYERS

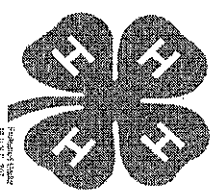
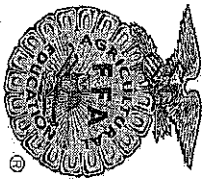
G. A. Farms  
 South Central Gin  
 T & S Electric

Conley Family  
 The Howard Center  
 Dr. Larry Moorman



2017 Reserve Champion Steer  
 Shown by Matthew Layfield

*Purchased by*  
**Conley Family**



# TIFT COUNTY STEER SHOW AND SALE REQUIREMENTS

IN ADDITION TO THE STATE SHOW REQUIREMENTS

1. Only bona fide Tift County 4-H Club or FFA members who attend a school in Tift County are eligible to participate upon approval of the show committee.
2. All persons who attend the show and sale do so at their own risk. The Tift County Quality Steer Show Committee will not assume any liability, legal or otherwise, for an accident of any nature.
3. No exhibitor can enter more than 2 steers and 3 heifers in the show.
4. Steers will be shown according to weight. Steers must weigh at least 900 pounds to be eligible for the show and sale.
5. There will be a maximum of six (6) weight classes. Classes will be broken at the discretion of the show committee.
6. A steer must show in the county show to be in the sale.
7. Home Grown/County Grown Class – The steer or heifer must be born and raised in Tift County. Prize money in this class will be limited to ten places and ribbons limited to three. Steers and heifers will be in separate classes.
8. Prizes for Showmanship are as follows: 1<sup>st</sup> – plaque, ribbon and \$60; 2<sup>nd</sup> – ribbon and \$50; 3<sup>rd</sup> – ribbon and \$45; 4<sup>th</sup> – \$40; 5<sup>th</sup> – \$35; 6<sup>th</sup> – \$30; 7<sup>th</sup> – \$25; 8<sup>th</sup> – \$20; 9<sup>th</sup> through - \$15.
9. The final classification will be decided at the discretion of the show committee of the steer show and sale.
10. All steers and heifers must be checked in at the designated time and place.
11. Services of a professional auctioneer will be provided for steers exhibited and sold.