



The Official Publication of the Georgia Club Calf Producers Association Est. 1997



Breeder Spotlight: 3J Farms

Contributed by Gibson Priest

President

Patrick Steed

Vice President

Sondra Moser

Executive Secretary

Carole Knight

Board of Directors

Jason Johns

Sid Arnold

Burt Jeffords

Tad Harper

Gary Farmer

Matt Shirley

Eight years, several show heifers, many awesome memories and my senior year beginning in a few months I reflect back on a telephone call I received after visiting a show in Calhoun, GA. Burt, Jaren, Josh and Lynne Jeffords of 3J Farms donated a calf for a raffle, I purchased 5 tickets and that telephone call started my show career. Whether donating a calf for a raffle, providing a facility and the animals for a judging contest, donating monetary funds for any and every event associated with junior exhibitors, judging teams and offering advice regarding show cattle, the Jeffords family has always been a support system for not only me but all juniors that have crossed their path. The Jeffords have a family owned and operated grading & construction business and numerous farms in and around the Calhoun, GA area. Their cow herd is predominantly Simmental based with a few select Angus and composite cows. They utilize an extensive

Artificial Insemination and Embryo Transfer program with genetics available on their elite donors.

This past show season 3J Farms was the breeder of the Reserve National Champion Simmental female in the junior show at the North American International Livestock Exposition. The heifer better known as "Burtie Sue" was either Supreme or Reserve Supreme heifer at all shows and was 3rd overall heifer at our state show in Perry, GA. 3J Farms also bred the Res. Champion Commercial heifer at the GA National Fair which also won many other honors. Other than these there have been many Champions bred through the 3J program.

It's only been a few years since Jaren was showing in the show ring alongside all of us and needless to say he was always willing and ready to help his fellow exhibitor in any and every way. That hasn't changed as he is still very supportive of all exhibitors whether they purchase calves from 3J Farms or are



Burt, Lynne, Jaren and Jaren's fiancée Stephanie Gibson

just in need of some advice or help with their show calf. The Jeffords are founding members of the Final Drive Club Calf Sale that is held in Calhoun, GA each March. They are members of the GA Club Calf Producers association and tag each of their calves so the exhibitor can reap the rewards for their hard work through the points contest. There is one thing for sure if you purchase a calf from 3J Farms you are guaranteed a support system for your project; as well as, a friendship with a family to be cherished.

The Jeffords are known for their devotion to their church, their family and their farms and I'm honored to have the opportunity to nominate them for the 2012 GCCPA Member Spotlight.

Letter from GCCPA President

Hello My Fellow Cattle Friends,

Let me be the first to thank the Georgia Club Calf Producers and Exhibitors for such an outstanding and productive year. We tagged around four hundred and ten calves that were eligible to compete in the points system and the 2012 GCCPA Awards Ceremony. It has be a phenomenal year for the beef cattle industry, but also a challenging year due to our countries economic status. Costs of inputs are out of the roof, and lack of rain is surely not helping us producers with our operations.

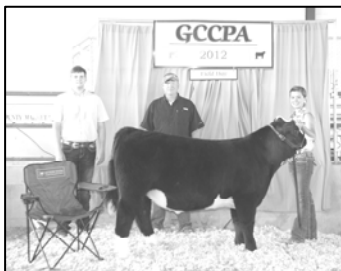
For those of you that do not know me; I am Patrick Steed, fourth generation cow- calf producer in Carrollton, GA. My family consists of my lovely wife Melanie and my two outstanding daughters, Logan and Baylee. As a kid growing up, my grandparents managed the local stockyard for forty five years. The local county show was held at the stockyard every year, and as a young boy I always looked forward to that time of the year. I did not have the opportunity to show cattle then, but always attended and tried to be in the middle of everything. Little did I know that as an adult I would be able to participate in this outstanding family project with my family and exhibiting cattle that came from some of the exhibitors I watched showing as a young boy.

With that said I am wishing everyone a successful and safe year with their showing and traveling. If there is anything I can do to help, don't hesitate to ask. You as families do not need to take this time with your kids, parents, grandparents, or advisors for granted. As a parent with children that are involved in showing and producing cattle I feel blessed and honored to participate in this organization. What a great group of people for my children to grow up around and to be involved with. I would like to thank everyone that has helped my family and I in the show cattle industry. As I close I would like to ask each exhibitor to stop and take a moment and look at their parents, grandparents, or advisors and say "thank you for what you do for me, I could not do it without you." May God bless you as much as he has me; let's get off on a good start to a new year.

Patrick Steed
2012-2013 GCCPA President

2012 GCCPA Field Day

The 2012 GCCPA Field Day was held on June 8-9 in Lyons, GA at the Toombs County FFA Alumni Livestock Facility. A fun-filled weekend of friends, food, contests and awesome cattle was had by all. A huge "THANK YOU" goes out to Terry Crooms, Cindy Morris, and Todd Claxton for their efforts in putting this event together. Thank you to our sponsors: Toombs County FFA Alumni, Ivey's Outdoor and Farm Supply, Pfizer Animal Health, Boehringer Ingelheim, Safe Guard, Bayer Animal Health, Moser Cattle Company, RSE Farms, Mead Cattle Enterprises, Wiregrass Cattle Company, Final Drive Club Calf Sale, A & A Cattle, Brown Farms, J & J Cattle Company, Rockin F Farms, Beville Family, Southland Cattle Services, and our Silent Auction Donors. Taking home top honors in our Jackpot Showmanship Showdown was Brooke Smith and Annalyn Butler. Grand Champion Steer went to Ali Moore with a calf bred by Middle W Farms. Reserve Champion Steer went to Matthew Beville with his steer bred by Shirley Show Cattle. In the British Division of heifers, Grand Champion went to Baylee Steed and Reserve Champion to Logan Steed. Both heifers bred by P & M Farms. Winning the Continental Division was Adam Floyd with his %-Simmental heifer bred by RSE Farms. Reserve Champion went to Sunni Mays with her Maintainer heifer bred by Brown Farms. In the Commercial Division, Wyatt Chandler was Grand Champion with his heifer bred by RSE Farms and Brooke Smith was Reserve Champion with her heifer bred by Corbett Farms. Supreme Champion honors went to Wyatt Chandler and Brooke Smith was Reserve. Check out www.georgiaclubcalves.org for a complete recap of all of the show results.



Grand Champ Steer
Ali Moore



Reserve Champ Steer
Matthew Beville



Supreme Heifer
Wyatt Chandler



Reserve Supreme Heifer
Brooke Smith

2011-2012 GCCPA Award Results

Commercial Heifer Division

	Fname	Lname	Breeder	Tag #	Points
1	Lori	Edwards	3-J Farms	44	135
2	Wyatt	Chandler	RSE Farms	19	129
3	Gracie	Claxton	Moser Cattle Co	392	111
4	Cal	Pope	Callaway Cattle Co	221	79
5	Gibson	Priest	Brookshire Cattle	242	67
6	Zachery	Weaver	Wiregrass Cattle Co	15	61
7	Candace	Barnes	Shady River Farms	134	60
8	Makayla	Holmes	Triple M Club Calves	89	52
9	Gabe	Brogdon	B4F	368	43
10	J.D.	Peavy	Brown Farms	371	42
11	Katie	Barlow	Davis Farms Show Cattle	23	41
12	Lori	Edwards	Edwards Club Calves	200	40
13	Danielle	Miller	Hidden Acres Farm	345	36
14	Alex	Rowell	Rowell Farms	140	35
15	Brett	Dyer	Crump Club Calves	254	32
16	Tate	Knight	Holmes Club Calves	62	29
16	Adam	Tawzer	CABE.	114	29
18	Maggie	Owens	Brookshire Cattle	241	25
19	Jaci	Handley	Cypress Creek Farm	216	24
20	Brady W.	Gentry	Edwards Club Calves	202	20
20	Alex	Vaughn	C & M Farms	389	20
22	Michael	Patterson	Carey Farms	176	19
22	Logan	Edwards	Shady River Farms	136	19
24	Joye Lynn	Handley	Cypress Creek Farm	217	14
25	Hill	Smith	Edwards Club Calves	201	13
26	Calvin	Willard	Talton Farms	298	10
27	Luke	Manning	Crump Club Calves	253	8
27	Wyatt	Chandler	RSE Farms	17	8
29	Robbie	Arnold	Triple M Farms	91	7
29	Morgan	Tolbert	Shirley Show Cattle	157	7

Other Breeds Heifer Division

	Fname	Lname	Breeder	Breed	Tag #	Points
1	Gibson	Priest	3-J Farms	Simmental	40	226
2	Clay	McGuire	Partisover Ranch	%-Simm	236	158
3	Tyler	Arnold	Moser Cattle Co	Chi-Inf	76	128
4	Tyler	Arnold	Pleasant Acres Farms	Limousin	206	95
5	Faith	Turk	Shirley Show Cattle	Maintainer	156	88
6	Brett	Dyer	Shirley Show Cattle	Chi-Inf	150	85
7	Annalyn	Butler	Darby Club Calves	Maintainer	94	82
8	Taylor	Wheless	Partisover Ranch	%-Simm	234	78
9	Cal	Pope	Callaway Cattle Co	%-Simm	222	71
10	Callie	Akins	Oleo Ranch	%-Simm	295	68
11	Alex	Rowell	Moser Cattle Co	%-Simm	192	60
12	Morgan	Tolbert	Chi-G Farms	Chi-Inf	210	53
13	John	Beville	J & J Cattle Co	%-Simm	266	52
14	Gage	Nichols	A & A Cattle	Limousin	162	48
15	Austin	Barnes	Partisover Ranch	%-Simm	286	47
16	Lori	Edwards	3-J Farms	%-Simm	46	43
16	Katie	Mealor	Hart Farms	Simmental	357	43
17	Chancey	Phillips	Pleasant Acres Farms	Limousin	79	41
18	Anna	Scott	RSE Farms	Chi-Inf	64	40
18	Jackson	Schieszer	Pleasant Acres Farms	Limousin	357	40
20	Brady W.	Gentry	Gibson's Farm	Balancer	70	38
21	Leanna	Roberts	Holmes Club Calves	%-Simm	61	36
22	Sarah	Cochran	Partisover Ranch	%-Simm	232	35
23	Michael	Patterson	4TF (Turk Farms)	Charolais	175	32
23	Merritt	Daniels	Lamberth Farms	%-Simm	172	32
25	Michael	Loughridge	Partisover Ranch	%-Simm	237	29
26	Tyler	Erztberger	Verner Farms	Balancer	269	28
27	Merritt	Daniels	Morgan Charolais	Charolais	252	26
28	Tate	Knight	J & J Cattle Co	%-Simm	264	25
29	Kelsey	Waters	Partisover Ranch	%-Simm	233	23
29	Morgan	Tolbert	Shirley Show Cattle	Chi-Inf	157	23
31	Erin	Jones	P & M Farms	Chi-Inf	354	22
32	Austin	Erztberger	Partisover Ranch	%-Simm	229	20
32	Callie	Craig	Partisover Ranch	%-Simm	228	20
32	Landon	Herring	Moser Cattle Co	Maintainer	196	20
35	Alex	McLaughlin	Pleasant Acres Farms	Limousin	355	19
35	Ashlyn	Payne	Diamond P Farms	%-Simm	385	19
37	Morgan	Crews	RSE Farms	Chi-Inf	18	6

British Heifer Division

	Fname	Lname	Breeder	Breed	Tag #	Points
1	Logan	Steed	P & M Farms	Angus	270	167
2	Hunter	Wilson	MM Cattle Company	Angus	121	153
3	Hannah	Barrett	Reasor Farms	Shorthorn	60	101
4	Gabe	Brogdon	CES Herefords	Hereford	308	92
5	Gracie	Claxton	A & A Cattle	Shorthorn Plus	142	75
6	Morgan	Fondren	Sandbriar Farms	Murray Grey	353	68
6	Gibson	Priest	MM Cattle Company	Angus	128	68
8	Logan	Steed	P & M Farms	Angus	271	61
9	Jackson	Schieszer	Shirley Show Cattle	Shorthorn Plus	154	59
10	Holly	Smith	Anton Angus Farm	Shorthorn	131	58
11	Morgan	Fondren	Visionary Cattle	Hereford	313	57
12	Thomas	Ross	K & M Shorthorns	Shorthorn Plus	51	48
13	Cal	Pope	Callaway Cattle Co	Angus	223	47
13	Allison	Cone	Rowell Farms	Shorthorn	146	47
13	Mekayla	Mclver	Verner Farms	Angus	268	47
16	Morgan	Fondren	Sandbriar Farms	Murray Grey	393	42
17	Robbie	Arnold	Triple M Farms	Angus	88	41
18	Hannah	Bius	Wiregrass Cattle Co	Shorthorn Plus	81	36
19	Seth	Robinson	Mead Cattle Enterprise	Hereford	324	35
20	Rebekah	Ramey	Mead Cattle Enterprise	Hereford	328	33
21	Gabe	Brogdon	B4F	Hereford	408	30
21	Taylor	Waldorp	Sammie Williams	Hereford	275	30
23	Mekayla	Mclver	Verner Farms	Angus	360	29
24	Curt	Craig	Oleo Ranch	Angus	280	28
25	Logan	Waldorp	MM Cattle Company	Angus	122	26
26	Daniel	Williams	Turnpike Creek Farms	Angus	186	24
26	Rebekah	Ramey	Mead Cattle Enterprise	Hereford	326	24
28	Christoph	Ramey	Mead Cattle Enterprise	Hereford	327	23
29	Anna	Scott	MM Cattle Company	Angus	122	22
30	Brady W.	Gentry	Gibson's Farm	Angus	71	20
31	Austin	Barnes	MM Cattle Company	Angus	126	19
32	Baylee	Steed	Triple M Farms	Angus	89	18
33	Drew	Williams	Turnpike Creek Farms	Angus	187	17
34	Holden	Ross	K & M Shorthorns	Shorthorn	362	15
35	Christoph	Ramey	Mead Cattle Enterprise	Hereford	329	14
35	Peyton	Mattox	Reggie Beasley	Hereford	361	14
37	Allison	Dorsey	Wiregrass Cattle Co	Angus	82	13
38	Tanya	Anderson	Anderson Farms	Angus	248	12
38	Caleb	Garner	B4F	Hereford	330	12
40	Reece	Ventura	K & M Shorthorns	Shorthorn	56	9
40	Gracie Dr	Johnson	B4F	Hereford	407	9
42	Ashley E.	Sapp	K & M Shorthorns	Shorthorn	282	7

Steer Division

	Fname	Lname	Breeder	Tag #	Points		Fname	Lname	Breeder	Tag #	Points
1	Cal	Pope	Callaway Cattle Co	224	170	41	Jake	Duncan	Mel-Joy Ranch	205	33
2	LeAnn	Beville	A & A Cattle	166	138	42	Leanna	Roberts	Darby Club Calves	11	32
3	Cole	Pendergast	Browns Farm	372	131	43	Adam	Tawzer	Taylor Club Calves	386	31
4	Wyatt	Chandler	RSE Farms	67	130	43	Devin	Edwards	Dyer Livestock	293	31
5	Tate	Knight	Holmes Club Calves	62	91	45	Callie	Craig	Craig Farms	279	31
6	Candace	Barnes	J & J Cattle Co	265	87	46	Jaci	Handley	Smith Brothers Land &	311	30
6	Morgan	Rowan	LenBar Farms	159	87	46	Maveric	Herod	Bowman Club Calves	274	30
8	Megan	Crooms	Moser Cattle Co	193	85	48	Jessica	White	Pleasant Acres Farm	356	28
9	Reece	Ventura	Wiregrass Cattle Co	83	80	49	Walt	Lipman	Mel-Joy Ranch	388	27
10	Anna	Scott	Wiregrass Cattle Co	80	77	50	Luke	Roberts	Moser Cattle Co	74	26
						51	Randi	Rouse	Thrasher Cattle Compa	43	24
11	Kevin	Edwards	3-J Farms	45	76	52	Gage	Nichols	Cypress Creek Farm	215	23
12	Callie	Akins	CABE.	110	72	52	Cody	McLeroy	Talmo Ranch	278	23
13	Randi	Rouse	Thrasher Cattle Compa	182	70	52	Katie	Royal	Bowman Club Calves	283	23
13	Logan	Waldorp	Davis Farms Show Catt	22	70	55	Adam	Standard	Plumblin Cattle	58	21
15	Brett	Boling	CABE.	112	69	56	Chantell	Matthews	Crump Club Calves	253	18
16	Austin	Saye	Pleasant Acres Farm	78	68	57	Tanya	Anderson	Anderson Farms	247	17
17	Candace	Barnes	Shady River Farms	135	63	58	Michael	Patterson	4TF (Turk Farms)	409	16
18	Trevor	Brown	RSE Farms	64	62	58	Sawyer	Lane	Dirt Road Farms	207	16
19	Sydney	Arnold	Shirley Show Cattle	155	57	60	Blake	Segars	Certain Cattle Co	379	14
20	Cole	Dorsey	Wiregrass Cattle Co	85	56	60	Jake	Duncan	Mel-Joy Ranch	206	14
						62	Calvin	Willard	Talton Farms	297	13
21	Gage	Odom	Browns Farm	375	55	62	Caleb	Garner	Rowell Farms	141	13
22	Brett	Dyer	NV Cattle	273	52	64	Sawyer	Lane	Dirt Road Farms	208	10
22	Hunter	Anderson	Pleasant Acres Farm	77	52	65	Morgan	Crews	P & M Farms	1	9
24	John	Beville	Chi-G Farms	214	50	65	Danielle	Miller	Hidden Acres Farm	346	9
25	Colby	Ellis	Visionary Cattle	322	48						
26	Ben	Herring	Moser Cattle Co	194	47						
27	Adam	Tawzer	Leonard Polled Herefor	380	43						
27	Ben	Duncan	Mel-Joy Ranch	204	43						
27	Landon	Herring	Moser Cattle Co	198	43						
30	Faith	Turk	Carey Farms	177	41						
30	Taylor	Waldorp	K & M Shorthorns	276	41						
32	Ben	Herring	Moser Cattle Co	195	40						
32	Conner	Ellis	Sandbriar Farms	232	40						
32	Trevor	Brown	Chi-G Farms	211	40						
32	Rayne	Gipson	Browns Farm	378	40						
36	Sam	Herring	Sandbriar Farms	50	37						
37	David	Bridges	Callaway Cattle Co	225	35						
38	Jordan	Harrison	CNC Farms	98	34						
38	Zachery	Weaver	A & A Cattle	160	34						
38	Leanna	Roberts	Moser Cattle Co	75	34						



Brooke Smith
Showmanship Showdown Champ



Annalyn Butler
Showmanship Showdown Res Champ

Breeder Awards

	Gold Seal Breeders	Points
1	Moser Cattle Co	594
2	3-J Farms	480
3	Parisover Ranch	410
4	Callaway Cattle Co	402
5	RSE Farms	375
6	Pleasant Acres Farm	343
7	Wiregrass Cattle Co	323
8	Shirley Show Cattle	319
9	A & A Cattle	295
10	MM Cattle Company	288
11	Brown Farms	268
12	P & M Farms	259
13	Sandbriar Farms	187
14	CABE.	170
15	J & J Cattle Co	164
16	Holmes Club Calves	156
17	Chi-G Farms	143
18	Shady River Farms	142
19	Mead Cattle Enterprise	129
20	K & M Shorthorns	120
21	Triple M Farms	118
22	Mel-Joy Ranch	117
23	Darby Club Calves	114
24	Davis Farms Show Cattle	111
25	Visionary Cattle	105
26	Verner Farms	104
27	Reasor Farms	101

Premier Breeder
Moser Cattle Company
Tim & Sondra Moser – Meansville, GA

Platinum Breeder
3J Farms
Burt & Jaren Jeffords – Fairmount, GA

	Silver Seal Breeders	Points
28	Oleo Ranch	96
29	Rowell Farms	95
30	B4F	94
30	Thrasher Cattle Company	94
32	Brookshire Cattle	92
32	CES Herefords	92
34	LenBar Farms	87
35	Edwards Club Calves	73
36	Cypress Creek Farm	61
37	Carey Farms	60
38	Anton Angus Farm	58
38	Crump Club Calves	58
38	Gibson's Farm	58
41	Bowman Club Calves	53
42	NV Cattle	52
43	4TF (Turk Farms)	48
44	Hidden Acres Farm	45
45	Leonard Polled Herefords	43
45	Hart Farms	43
47	Turnpike Creek Farms	41
48	CNC Farms	34
49	Lamberth Farms	32
50	Craig Farms	31
50	Dyer Livestock	31
50	Taylor Club Calves	31
53	Sammie Williams	30
53	Smith Brothers Land & Cattle	30
55	Anderson Farms	29
56	Dirt Road Farms	26
56	Morgan Charolais	26
58	Talmo Ranch	23
58	Talton Farms	23
60	Plumblin Cattle	21
61	C & M Farms	20
62	Diamond P Farms	19
63	Certain Cattle Co	14
63	Reggie Beasley	14

Georgia Club Calf
Producers Association

863 Effingham Hwy
Sylvania, GA 30467

PHONE:
912-690-1727

E-MAIL:
CLH@UGA.EDU

We're on the Web!

See us at:

www.georgiclubcalves.org

Calendar of Events

July 23-35 - UGA Livestock Judging Clinic – Tifton, GA

August 10-11 - GA Young Farmer Association Cattle Show – Perry, GA

September 1-2 – 2012 Bring on the Heat Jackpot – Nicholls, GA

October 4-7 – Georgia National Fair – Perry, GA

October 12-14 – Georgia National Fair Jr Invitational – Perry, GA

About Our Organization..

The overall objective of GCCPA is to enhance the Georgia Junior Livestock Program by providing special award programs to 4-H and FFA youth who exhibit GCCPA calves and to assist its membership in the production and marketing of genetically superior show cattle.

GCCPA

C/O CAROLE KNIGHT
863 EFFINGHAM HWY
SYLVANIA, GA 3046Y

